

# Single Package Vertical Air Conditioners



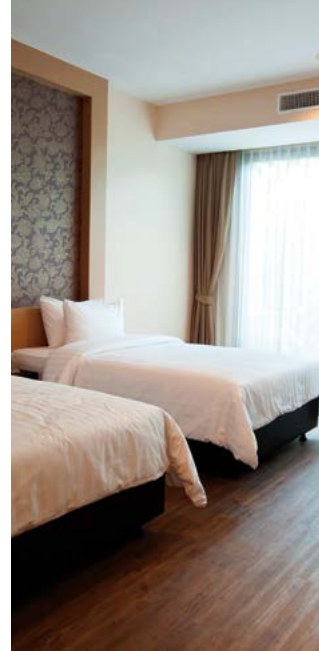
**FRIEDRICH**  
1 8 8 3

## Vert-I-Pak<sup>®</sup> Series

Installs easily in a closet for quiet operation



# A Better Solution for Hospitality and Multi-Family Suites



**Vert-I-Pak® is a quiet, energy efficient option for extended stay properties, suites, assisted living, student housing and commercial spaces.**

Ducted and closet-mounted, Vert-I-Pak eliminates the need for multiple through the wall units. The packaged Vert-I-Pak unit is installed out of sight, so guests enjoy a more attractive, more homelike appearance.



### Electric Heat

**COOLING**  
8900-23000 Btu  
Up to 10.7 EER  
**ELECTRIC HEAT**  
8500-34130 Btu

### Heat Pump

**COOLING**  
8900-23000 Btu  
Up to 10.7 EER  
**REVERSE HEATING**  
8600 -20000 Btu  
All 3.0 COP  
**AUXILIARY  
ELECTRIC HEATING**  
8500-34130 Btu



## Better Aesthetics

### Outdoors

Packaged unit eliminates the clutter of outdoor condensing units and the sleek architectural grille is available in custom colors to match the building's exterior.

### Indoors

The unit is installed out of sight, so all the guest sees is a wall thermostat.



## VERT-I-PAK® IS A SUPERIOR PRODUCT

### What you'll find on Friedrich Vert-I-Pak®

1. Floating chassis design slides into a wall plenum and is held firmly in place by a sealing gasket, reducing noise from vibration transfer.
2. ½ inch foil-backed insulation added on the inside of the chassis to reduce sound transmission into the guest room.
3. Efficiencies above industry standards with EERs up to 10.7.
4. Condensate removal system uses slinger ring technology to cool the coil and increase efficiency.
5. Dynamically balanced blower with large, vibration-absorbing motor mounts for smooth and quiet operation.
6. Patented telescoping plenums (accessory) easily adapt to more installations.
7. 5 year limited warranty\* (on the sealed system) includes labor.

\* See warranty documentation for details.

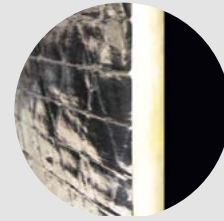
### What you'll find on many competitor's products

1. Chassis is screwed into the wall plenum. Metal-on-metal contact transfers vibration, increasing operating noise under typical conditions. Noise is transferred through the walls and into the room.
2. No insulation on the unit to reduce noise transmission into the guest room.
3. Hard plastic feet on the unit base which are less durable and transfer harsh vibration noise.
4. Different plenums needed based on varying wall depths.
5. No labor warranty.

# Friedrich engineered for quieter performance

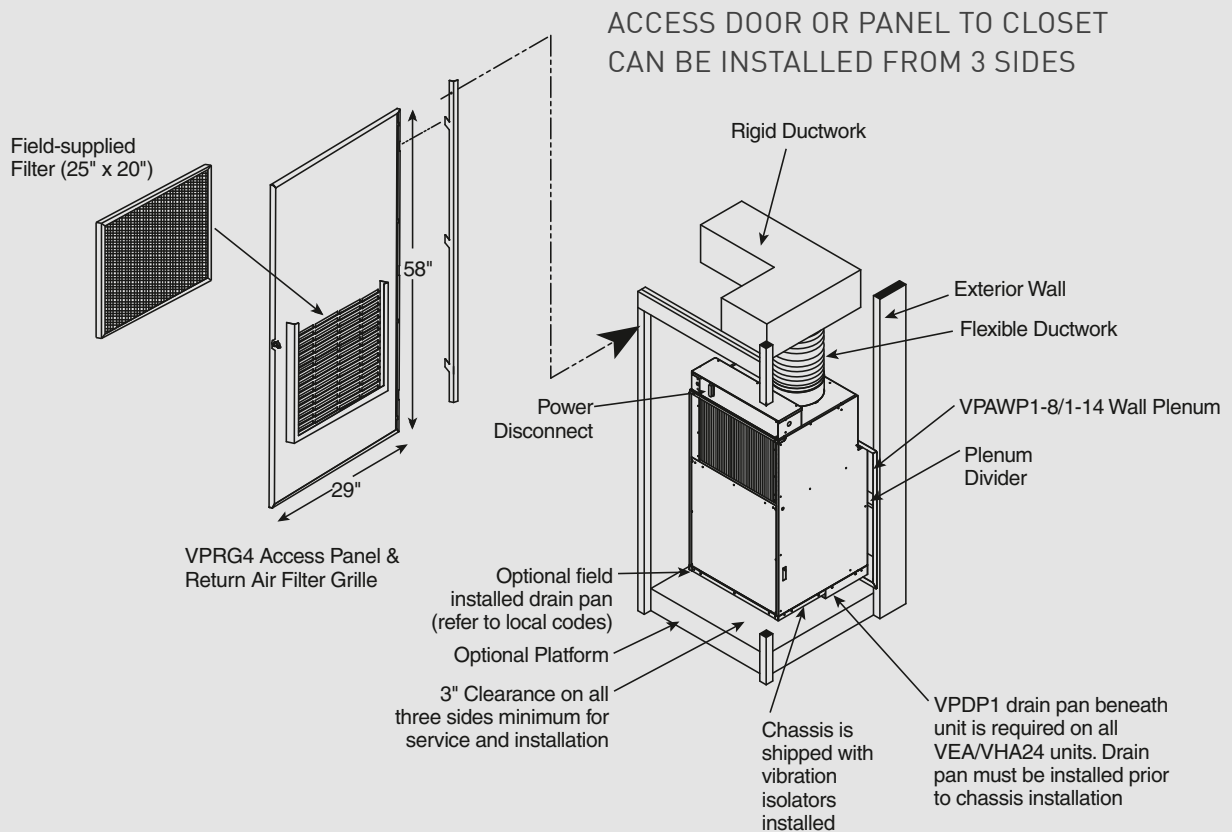
## Friedrich's 'Free Floating' chassis design and superior insulation help to eliminate vibration noise

The chassis slides into the wall plenum and a gasket firmly seals the chassis to the patented telescoping plenum. This eliminates vibration noises that are transmitted into the room in competitor's metal-on-metal fixed installations. Extra thick, vibration-absorbing rubber grommets mounted on durable base that is engineered for structural and acoustic integrity.



Foil-backed, 1/2" insulation blanket inside the cabinet reduces sound transmitted into the guest room

### TYPICAL VERT-I-PAK® INSTALLATION



## VERT-I-PAK® ADVANTAGES

### A better heating and cooling option inside and out

- **Eliminates the clutter** of outdoor condensing units and the need for vandalism barriers.
- Completely **self-contained**
- **No refrigerant lines** running from floor to floor
- **Fast, easy replacement** keeps spaces livable

### Improved guest comfort

- **Individually** controlled
- Heat and cool
- **Duct air specifically where it's needed**, not just on the outside wall
- 2-speed fan with **constant fan option** on Friedrich RT6 and WRT1 thermostats

### A better choice than whole building solutions

- **Lower installed cost**
- **Independent metering** (no need to prorate for multitenant applications)
- **Individual temperature set point** (one unit can heat and others can cool)
- **Less risk**, with a whole building system, spaces may become uninhabitable until the system is repaired or replaced
- Vert-I-Pak can be **easily accessed** for maintenance or replacement

### Warranty and Support

- **Industry leading warranty** features 1 year full warranty on parts and labor and 5 year limited warranty.
- **Nationwide service network and U.S. based Friedrich expert technical team** ensures you get fast, knowledgeable service.



## FEATURES

### Reliable and durable

- PSC **permanently lubricated motor** for low maintenance and maximum efficiency
- Engineered drain pan **won't rust**, eliminating the risk of unsightly rust stains from condensation on the building exterior
- Painted, **18-gauge galvanized steel** cabinet resists corrosion
- Standard safety power disconnect
- Electronic control panel on unit for **easy diagnostics and servicing**
- **100% run tested** prior to shipment- Every unit is tested in every operating mode before it ships for optimal performance and reliability

  
**DIAMONBLUE**  
Advanced Corrosion Protection®



Protects the outdoor coil against deterioration and extends the life of the unit especially in harsh coastal environments.

### Easy installation

- Can be installed from any interior side (front, right or left)
- **Ductable** to multiple rooms
- **Compact and lightweight**, weighs as little as 114 lbs.
- Installation does not require an HVAC technician
- **Prewired**, charged and piped
- All units are **ready to install** with only electrical hook up needed to be up and running
- 10" crimped and beaded duct-collar ready to attach flex duct
- Patented **telescoping wall plenums** adjust to fit varying exterior wall thicknesses
- Primary condensate removal system provided thru 3/4" pipe fittings for more placement options
- Secondary overflow from primary drain\*
- **Central desk control** ready
- 24-volt remote wireless or wired thermostat ready
- All units are shipped (on pallet) with return air filter

### Energy management thermostats available


- **Wired and wireless** thermostats
- Integrated **motion and thermal** occupancy sensor
- Auto changeover
- 5 distinct energy presets
- Comprehensive remote management capability\*\*



\* 24000 Btu model uses secondary gravity-fed drain. \*\* Energy management capability requires purchase of additional hardware and service fee

# Easily replace older First Company® vertical units\*


Vert-I-Pak® is an exact fit for existing First Company SPXR-series single package vertical units when installed with the VPASA1 Sleeve Adapter.



Sleeve Adapter Kit

SINGLE-PIECE welded adapter for a rigid installation

NO EXPENSIVE CUTTING or RE-SIZING of wall opening necessary




EXACT FIT to First Company sleeve

EASY CONNECTION to Friedrich chassis


---

### SAVE ON ENERGY COSTS WITH HIGHER EFFICIENCY VERT-I-PAK® UNITS

Friedrich Vert-I-Pak		First Company
9000 Btu A/C	10.7 EER	9.0 EER
12000 Btu A/C	10.5 EER	9.0 EER
18000 Btu A/C	9.0 EER	9.0 EER
9000 Btu HP	10.7 EER	9.0 EER
12000 Btu HP	10.3 EER	9.0 EER
18000 Btu HP	9.1 EER	9.0 EER



Friedrich Vert-I-Pak



Replaces First Company SPXR Series

## IMPORTANT FEATURE COMPARISONS

Feature	Friedrich Vert-I-Pak	First Company
ARI Certification	YES	NO
Warranty	1st Year Bumper to Bumper, Parts & Labor. 2nd - 5th Year Sealed Refrigeration System, Parts & Labor	1st Year Parts Only. 2nd Year Compressor, Parts Only
Corrosion Protection	Standard	Not Available
Weight	114 Lbs. to 167 Lbs.	245 Lbs. to 255 Lbs.

### Service/Support

- Dedicated Service/Sales/Order Support based in San Antonio, TX
- Ability to set up installer as warranty service agent
- Over 1,500 independent service agents throughout the U.S.

\* SPXR-series models sold through Amana and Carrier.

Closest dimensional limitations apply. Sleeve adapter kit includes all parts necessary to mate with First Company sleeve.

## OPTIONAL ACCESSORIES

### ARCHITECTURAL LOUVER

#### VPAL2 and VPSC2

Extruded aluminum grille that attaches to the outdoor section of the wall plenum. Takes in fresh air and returns condensed air. VPSC2 can be ordered in custom colors.

DIMENSIONS: 25 9/16" W x 31 1/16" H



VPAL2



VPAWP1-8

### WALL PLENUM

#### VPAWP1-8, VPAWP1-14

Two-part sleeve that telescopes in and out; sits inside the exterior wall penetration.

VPAWP1-8 telescopes from 5 1/2"–8"

VPAWP1-14 telescopes from 8"–14"

DIMENSIONS: 24 1/8" W x 30 3/8" H

CUTOUT DIMENSIONS: 24 5/8" W x 30 7/8" H

### RETURN AIR GRILLE/ ACCESS PANEL

#### VPRG4 / VPRG4R

Hinged panel allows access to unit and return air filter.

A field-supplied filter (25" x 20") should be mounted on the inside grille. Panel can be mounted with return air openings high or low on the door for optimum sound attenuation.

DIMENSIONS: 29" W x 58" H

CUTOUT DIMENSIONS: 27" W x 55 3/4" H



VPRG4/  
VPRG4R

### FIRST COMPANY SLEEVE ADAPTER

#### VPASA1

Single piece, welded adapter allows retrofit into existing First Company® SPXR-series single package vertical unit wall sleeve and louver. Easily connects to Friedrich chassis.



VPASA1

### SINGLE STAGE THERMOSTATS

#### RT6

Wired, single stage, wall-mounted digital thermostat has two fan speeds and backlight. Controls Friedrich VERT-I-PAK.

#### WRT1

Wireless, single stage, wall-mounted digital thermostat has two fan speeds and backlight. Controls Friedrich VERT-I-PAK.



RT6



WRT1

### ENERGY MANAGEMENT THERMOSTATS

#### EMRT1

Wired thermostat has occupancy sensor.

#### EMWRT1

Wireless thermostat has occupancy sensor.

#### EMOCT

Online connection kit.

#### EMRAF

Remote access fee.

#### EMRHCF

Remote humidity control fee.



EMRT1, EMWRT1

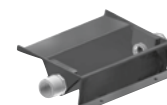


### DRAIN PAN

#### VPDP1

For VEA/VHA24 models. May be installed prior to chassis for easy installation/removal.

VPDP1



# SPECIFICATIONS

MODEL	VEA09K	VEA12K	VEA18K	VEA24K	VHA09K	VHA09R	VHA12K	VHA12R	VHA18K	VHA18R	VHA24K	VHA24R
<b>COOLING DATA</b>												
COOLING BTU	9000/9000	12000/12000	17000/16500	23000/22700	9000/9000	9000	12000/12000	12000	17000/16800	16800	23000/22800	22500
POWER [W]	840/840	1145/1120	1890/1835	2420/2390	855/855	855	1165/1165	1190	1870/1845	1845	2525/2505	2475
EER	10.7/10.7	10.5/10.7	9.0/9.0	9.5/9.5	10.5/10.5	10.5	10.3/10.3	10.1	9.1/9.1	9.1	9.1/9.1	9.1
SENSIBLE HEAT RATIO	0.77	0.74	0.70	0.70	0.77	0.77	0.75	0.77	0.70	0.70	0.70	0.70
HEATER SIZE (kW)	2.5/3.4/5.0	2.5/3.4/5.0	2.5/3.4/5.0	2.5/3.4/5.0/7.5/10.0	2.5/3.4/5.0	2.5/3.4/5.0	2.5/3.4/5.0	2.5/3.4/5.0	2.5/3.4/5.0	2.5/3.4/5.0	2.5/3.4/5.0/7.5/10.0	2.5/3.4/5.0/7.5/10.0
<b>HEAT PUMP DATA</b>												
HEATING BTU	—	—	—	—	8480/8400	8650	11500/11200	11000	16000/15000	15900	20000/20000	20000
COP @ 47F	—	—	—	—	3.0/3.1	3.0	3.0/3.1	3.0	3.0/3.0	3.0	3.0/3.0	3.0
HEATING POWER (W)	—	—	—	—	830/795	845	1125/1060	1075	1560/1540	1550	1953/1953	1950
HEATING CURRENT (A)	—	—	—	—	3.7/3.9	3.2	4.8/5.0	4.1	7.5/8.2	6.5	8.5/9.4	8.1
<b>ELECTRICAL DATA</b>												
VOLTAGE (1 PHASE, 60 HZ)	230/208	230/208	230/208	230/208	230/208	265	230/208	265	230/208	265	230/208	265
VOLT RANGE	253-197	253-197	253-197	253-197	253-197	292/239	253-197	292/239	253-197	292-239	253-197	292-239
COOLING CURRENT (A)	3.9/4.2	5.1/5.4	8.1/8.6	10.0/10.4	3.8/3.9	3.8	5.3/5.6	4.7	8.2/8.6	6.9	10.9/10.6	9.7
AMPS L.R	21.0	29.5	42.0	46.0	21.0	21.0	30.0	30.0	42.0	42.0	46.0	46.0
AMPS F.L.	3.5	4.7	7.8	9.5	3.5	3.5	4.8	4.8	7.8	7.8	9.5	9.5
INDOOR MOTOR (HP)	1/4	1/4	1/4	1/4	1/4	1/4	1/4	1/4	1/4	1/4	1/4	1/4
INDOOR MOTOR (A)	1.2	1.2	1.2	1.9	1.2	1.2	1.2	1.2	1.2	1.2	1.9	1.8
OUTDOOR MOTOR (HP)	—	—	—	1/4	—	—	—	—	—	—	1/4	1/4
OUTDOOR MOTOR (A)	—	—	—	0.85	—	—	—	—	—	—	0.85	0.9
<b>PHYSICAL</b>												
DIMENSIONS (W X D X H)	23"x23"x32"	23"x23"x32"	23"x23"x32"	23"x23"x47"	23"x23"x32"	23x23x32	23"x23"x32"	23x23x32	23"x23"x32"	23"x23"x32"	23"x23"x47"	23"x23"x47"
NET WEIGHT (LBS)	114	124	144	167	114	114	125	124	144	165	167	187
SHIPPING WEIGHT (LBS)	125	135	155	220	125	125	136	135	155	176	220	240
TEST SETTING	LOW	LOW	HIGH	LOW	LOW	LOW	LOW	LOW	HIGH	HIGH	LOW	LOW
R410A CHARGE (OZ)	41.5	45	48.1	65	38	39	39.5	37	48	48	65	65
<b>AIRFLOW DATA</b>												
INDOOR CFM	LOW HIGH	LOW HIGH	LOW HIGH	LOW HIGH	LOW HIGH	LOW HIGH	LOW HIGH	LOW HIGH	LOW HIGH	LOW HIGH	LOW HIGH	LOW HIGH
.10" ESP.10" ESP	405 450	420 450	400 480	610 700	420 450	420 450	420 450	390 450	400 480	400 480	610 700	610 700
.15" ESP.10" ESP	375 420	405 425	375 465	585 670	405 425	405 425	405 425	375 425	375 465	375 465	585 670	585 670
.20" ESP.10" ESP	345 385	385 400	350 450	560 640	385 400	385 400	385 400	350 400	350 450	350 450	560 640	560 640
.25" ESP.10" ESP	325 365	355 375	330 390	535 610	355 375	355 375	355 375	325 375	330 390	330 390	535 610	535 610
.30" ESP.10" ESP	305 340	320 350	310 330	510 580	320 350	320 350	320 350	320 350	310 330	310 330	510 580	510 580
VENT CFM	60	60	60	60	60	60	60	60	60	60	60	60

**NOTES:**

COOLING STANDARDS: 95°F DB/75°F WB OUTDOOR, 80°F DB/67°F WB INDOOR  
 HEATING STANDARDS: 47°F DB/43°F WB OUTDOOR, 70°F DB/60°F WB INDOOR  
 NORMAL VALUE WET COIL @ .1" ESP.  
 RATED CFM AT LOW SPEED: VEA09/VHA09....325 VEA12/VHA12....390  
 VEA18/VHA18....400 VEA24/VHA24....610

Due to continuing research in new energy-saving technology, specifications are subject to change without notice.



Friedrich Air Conditioning Co. | 10001 Reunion Place, Suite 500 | San Antonio, TX 78216 | 877.599.5665 | www.friedrich.com